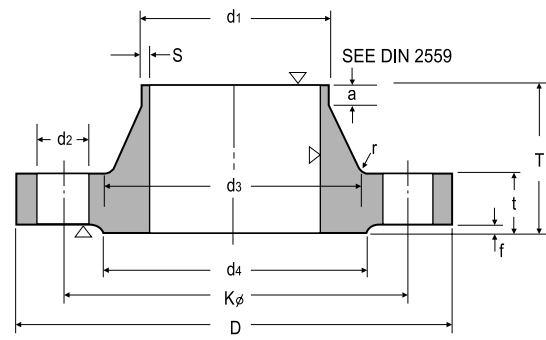


DIN FLANGE 6 BAR

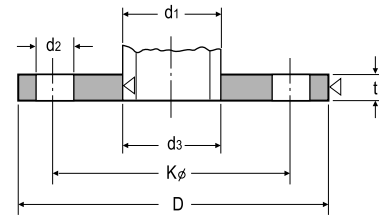
DIN 2573 PN 6 SLIP - ON FLANGES

DIN 2527 PN 6 BLIND FLANGES

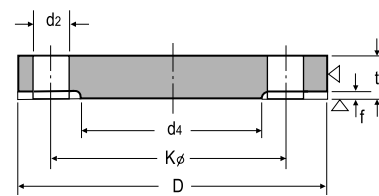
DIN 2631 PN 6 WELDING NECK FLANGES



WELDING NECK



SLIP-ON



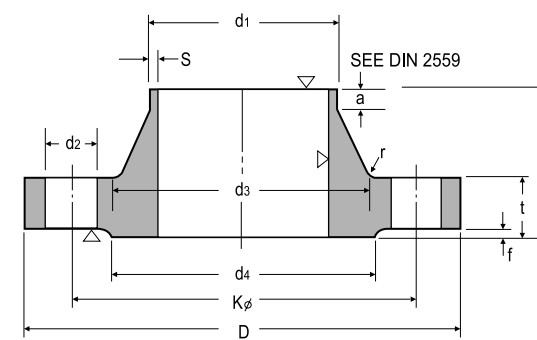
BLIND

DIN FLANGE 10 BAR

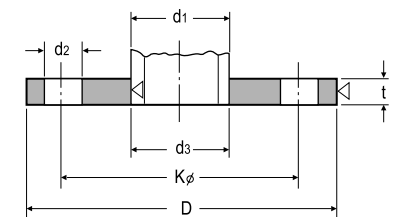
DIN 2576 PN 10 SLIP - ON FLANGES

DIN 2527 PN 10 BLIND FLANGES

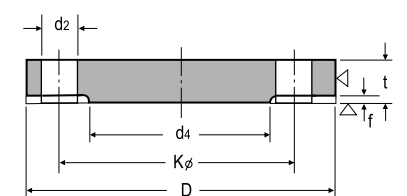
DIN 2632 PN 10 WELDING NECK FLANGES



WELDING NECK



SLIP-ON



BLIND

Unit:mm

Nominal Bore	Bore		Common Dimension					Hub				Raised Face		Drilling			Approx.Weight(kg)		
	d1	D	t			K	T	d3	s	r	a	d4	f	Number of Bolt	Dia. of Bolt	d2	DIN 2631	DIN 2573	
			Welding Neck	Slip-on	Blind														
10	14 17.2-)	75	12	12	12	50	28	22 26	1.8	4	6	35	2	4	M10	-	11.5	0.036	0.325
15	20 21.3-)	80	12	12	12	55	30	26 30	2.0	4	6	40	2	4	M10	-	11.5	0.410	0.392
20	25 26.9-)	90	14	14	14	65	32	35 38	2.3	4	6	50	2	4	M10	-	11.5	0.600	0.592
25	30 33.7-)	100	14	14	14	75	35	40 42	2.6	4	6	60	2	4	M10	-(1/2")	11.5	0.740	0.747
32	38 42.4-)	120	14	16	14	90	35	50 55	2.6	6	6	70	2	4	M12	(1/2")	14	1.19	1.05
40	44.5 48.3-)	130	14	16	14	100	38	55 62	2.6	6	7	80	3	4	M12	(1/2")	14	1.39	1.18
50	57 60.3-)	140	14	16	14	110	38	70 74	2.9	6	8	90	3	4	M12	(1/2")	14	1.53	1.34
65	76.1-)	160	14	16	14	130	38	88	2.9	6	9	110	3	4	M12	(5/8")	14	1.89	1.67
80	88.9-)	190	16	18	16	150	42	102	3.2	8	10	128	3	4	M16	(5/8")	18	2.98	2.71
100	108 114.3-)	210	16	18	16	170	45	122 130	3.6	8	10	148	3	4	M16	(5/8")	18	3.46	3.24
125	133 139.7-)	240	18	20	18	200	48	148 155	4.0	8	10	178	3	8	M16	(5/8")	18	4.60	4.49
150	159 168.3-)	265	18	20	18	225	48	172 184	4.5	10	12	202	3	8	M16	(5/8")	18	5.22	5.15
200	216 219.1-)	320	20	22	20	280	55	230 236	5.9	10	15	258	3	8	M16	(5/8")	18	7.15	7.78
250	267 273-)	375	22	24	22	335	60	282 290	6.2	12	15	312	3	12	M16	(3/4")	18	9.61	10.8
300	318	440	22	24	22	395	62	335 342	7.1	12	15	365	4	12	M20	(3/4")	23	12.6	14.0
350	355.6-)	490	22	26	22	445	62	385	7.1	12	15	415	4	12	M20	(3/4")	23	15.6	16.1
400	406.4-)	540	22	28	22	495	65	438	7.1	12	15	455	4	16	M20	(3/4")	23	18.4	18.3
500	419 508-)	645	24	30	24	600	68	538	7.1	12	15	570	4	20	M20	(7/8")	23	24.5	24.6
600	609.6-)	755	24	-	-	705	70	640	7.1	12	16	670	5	20	M24	(7/8")	27	-	-
700	711.2-)	860	24	-	-	810	70	740	7.1	12	16	775	5	24	M24	(1")	27	-	-
800	720 812.8-)	975	24	-	-	920	70	842	7.1	12	16	880	5	24	M27	(1")	30	-	-
900	914.4-)	1075	26	-	-	1020	70	942	7.1	12	16	980	5	24	M27	(1")	30	-	-
1000	920 1016-)	1175	26	-	-	1120	70	1045	7.1	16	16	1080	5	28	M27	-	30	-	-

Notes : Out side diameter of pipe complies with ISO recommendation R64

Unit:mm

Nominal Bore	Bore		Common Dimension					Hub				Raised Face		Drilling			Approx.Weight(kg)		
	d1	D	t			K	T	d3	s	r	a	d4	f	Number of Bolt	Dia. of Bolt	d2	DIN 2632	DIN 2576	
			Welding Neck	Slip-on	Blind														
10	14 17.2-)	90	14	14	14	60	35	25 28	1.8	4	6	40	2	4	M12	(1/2")	14	0.163	0.580
15	20 21.3-)	95	14	14	14	65	35	30 32	2.0	4	6	45	2	4	M12	(1/2")	14	0.675	0.648
20	25 26.9-)	105	16	16	16	75	38	35 40	2.3	4	6	58	2	4	M12	(1/2")	14	0.947	0.952
25	30 33.7-)	115	16	16	16	85	38	42 45	2.6	4	6	68	2	4	M12	(1/2")	14	1.14	1.14
32	38 42.4-)	140	16	16	16	100	40	52 56	2.6	6	6	78	2	4	M16	(5/8")	18	1.66	1.69
40	44.5 48.3-)	150	16	16	16	110	42	60 64	2.6	6	7	88	3	4	M16	(5/8")	18	1.89	1.86
50	57 60.3-)	165	18	18	18	125	45	72 75	2.9	6	8	102	3	4	M16	(5/8")	18	2.51	2.53
65	76.1-)	185	18	18	18	145	45	90	2.9	6	10	122	3	4	M16	(5/8")	18	3.00	3.06
80	88.9-)	200	20	20	20	160	50	105	3.2	8	10	138	3	4	M16	(5/8")	18	3.79	3.70
100	108 114.3-)	220	20	20	20	180	52	125 131	3.6	8	12	158	3	8	M16	(5/8")	18	4.20	4.62
125	133 139.7-)	250	22	22	22	210	55	150 156	4.0	8	12	188	3	8	M16	(5/8")	18	5.71	6.30
150	159 168.3-)	285	22	22	22	240	55	175 184	4.5	10	12	212	3	8	M20	(3/4")	23	6.72	7.75
200	216 219.1-)	340	24	24	24	295	62	232 235	5.9	10	16	268	3	8	M20	(3/4")	23	9.50	11.3
250	267 273-)	395	26	26	26	350	68	285 292	6.3	12	16	320	3	12	M20	(3/4")	23	12.5	14.7
300	318	445	26	26	26	400	68	335 344	7.1	12	16	370	4	12	M20	(3/4")	23	14.4	17.6
350	355.6-)	505	26	28	30	460	68	385	7.1	12	16	430	4	16	M20	(3/4")	23	20.6	21.4
400	406.4-)	565	26	32	32	515	72	440	7.1	12	16	482	4	16	M24	(7/8")	27	27.9	26.1
500	419 508-)	670	28	38	34	620	75	542	7.1	12	16	585	4	20	M24	(7/8")	27	41.1	34.7
600	609.6-)	780	28	-	-	725	80	642	7.1	12	18	685	5	20	M27	(1")	30	-	-
700	711.2-)	895	30	-	-	840	80	745	8.0	12	18	800	5	24	M27	(1")	30	-	-
800	720 812.8-)	1015	32	-	-	950	90	850	8.0	12	18	905	5	24	M30	(1 1/8")	33	-	-
900	914.4-)	1115	34	-	-	1050	95	950	10.0	12	20	1005	5	28	M30	(1 1/8")	33	-	-
1000	920 1016-)	1230	34	-	-	1160	95	1052	10.0	16	20	1110	5	28	M33	(1 1/8")	36	-	-

Notes : Out side diameter of pipe complies with ISO recommendation R64