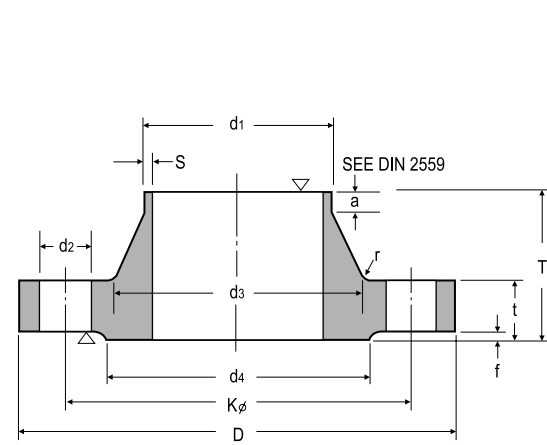
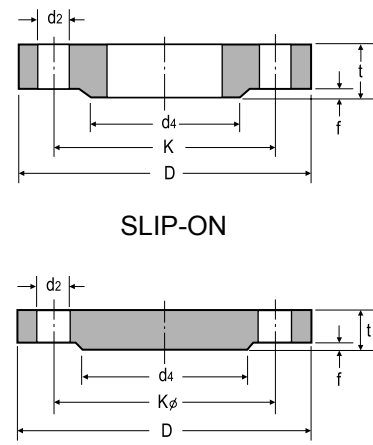


DIN FLANGE 16 BAR

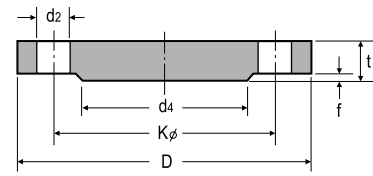
DIN 2543 PN 16 SLIP - ON FLANGES
 DIN 2527 PN 16 BLIND FLANGES
 DIN 2633 PN 16 WELDING NECK FLANGES



WELDING NECK



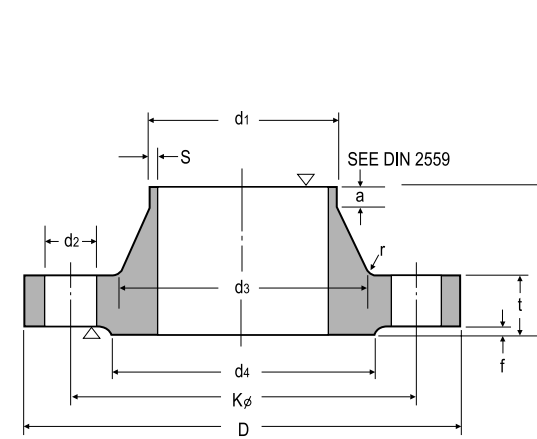
SLIP-ON



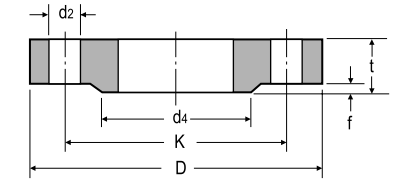
BLIND

DIN FLANGE 25 BAR

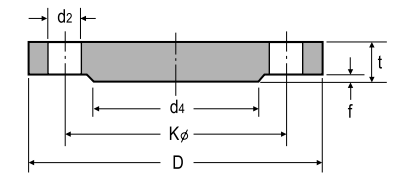
DIN 2544 PN 25 SLIP - ON FLANGES
 DIN 2527 PN 25 BLIND FLANGES
 DIN 2634 PN 25 WELDING NECK FLANGES



WELDING NECK



SLIP-ON



BLIND

Unit:mm

Nominal Bore	Bore		Common Dimension					Hub				Raised Face		Drilling			Approx.Weight(kg)		
	d1	D	t			K	T	d3	s	r	a	d4	f	Number of Bolt	Dia. of Bolt	d2	DIN 2633	DIN 2543	
			Welding Neck	Slip-on (no-hub)	Blind														
10	14	90	14	14	14	60	35	25	1.8	4	6	40	2	4	M12	[1/2"]	14	0.63	0.580
15	20	95	14	14	14	65	35	30	2.0	4	6	45	2	4	M12	[1/2"]	14	0.72	0.648
20	26.9	105	16	16	16	75	38	40	2.3	4	6	58	2	4	M12	[1/2"]	14	1.01	0.952
25	33.7	115	16	16	16	85	38	42	2.6	4	6	68	2	4	M12	[1/2"]	14	1.23	1.14
32	42.4	140	16	16	16	100	40	52	2.6	6	6	78	2	4	M16	[5/8"]	18	1.80	1.69
40	48.3	150	16	16	16	110	42	60	2.6	6	7	88	3	4	M16	[5/8"]	18	2.09	1.86
50	57	165	18	18	18	125	45	72	2.9	6	8	102	3	4	M16	[5/8"]	18	2.88	2.53
65	60.3	185	18	18	18	145	45	90	2.9	6	10	122	3	4	M16	[5/8"]	18	3.66	3.06
80	88.9	200	20	20	20	160	50	105	2.2	8	10	138	3	8	M16	[5/8"]	18	4.77	3.70
100	108	220	20	20	20	180	52	125	3.6	8	12	158	3	8	M16	[5/8"]	18	5.65	4.62
125	133	250	22	22	22	210	55	150	4.0	8	12	188	3	8	M16	[5/8"]	18	8.42	6.30
150	159	285	22	22	22	240	55	175	4.5	10	12	212	3	8	M20	[3/4"]	23	10.4	7.75
200	216	340	24	24	24	295	62	232	5.9	10	16	268	3	12	M20	[3/4"]	23	16.1	11.0
250	267	405	26	26	26	355	70	285	6.3	12	16	320	3	12	M24	[7/8"]	27	24.9	15.6
300	318	460	28	28	28	410	78	338	7.1	12	16	378	4	12	M24	[7/8"]	27	35.1	22.0
350	355.6	520	30	30	30	470	82	390	8.0	12	16	438	4	16	M24	[7/8"]	27	47.8	28.7
400	406.4	580	32	32	32	525	85	445	8.0	12	16	490	4	16	M27	[1"]	30	63.5	36.3
500	508	715	34	36	34	650	90	548	8.0	12	16	610	4	20	M30	[1 1/8"]	33	102.0	59.3
600	609.6	840	36	40	-	770	95	652	8.8	12	18	725	5	20	M33	[1 1/4"]	36	-	-
700	711.2	910	36	-	-	840	100	755	8.8	12	18	795	5	24	M33	[1 1/4"]	36	-	-
800	812.8	1025	38	-	-	950	105	855	10.0	12	20	900	5	24	M36	[1 3/8"]	39	-	-
900	914.4	1125	40	-	-	1050	110	955	10.0	12	20	1000	5	28	M36	[1 3/8"]	39	-	-
1000	1016	1255	42	-	-	1170	120	1058	10.0	16	20	1115	5	28	M39	[1 1/2"]	42	-	-

Notes : Out side diameter of pipe complies with ISO recommendation R64

Unit:mm

Nominal Bore	Bore		Common Dimension					Hub				Raised Face		Drilling			Approx.Weight(kg)		
	d1	D	t			K	T	d3	s	r	a	d4	f	Nominal of Bolt	Dia. of Bolt	d2	DIN 2632	DIN 2576	
			Welding Neck	Slip-on	Blind														
10	14	90	16	16	16	60	35	25	1.8	4	6	40	2	4	M12	[1/2"]	14	0.72	0.6610
15	20	95	16	16	16	65	38	30	2.0	4	6	45	2	4	M12	[1/2"]	14	0.81	.746
20	26.9	105	18	18	18	75	40	32	2.3	4	6	58	2	4	M12	[1/2"]	14	1.24	1.06
25	33.7	115	18	18	18	85	40	42	2.6	4	6	68	2	4	M12	[1/2"]	14	1.38	1.29
32	42.4	140	18	18	18	100	42	52	2.6	6	6	78	2	4	M16	[5/8"]	18	2.03	1.88
40	48.3	150	18	18	18	110	45	60	2.6	6	7	88	3	4	M16	[5/8"]	18	2.35	2.34
50	57	165	20	20	20	125	48	72	2.9	6	8	102	3	4	M16	[5/8"]	18	3.20	2.82
65	60.3	185	22	22	22	145	52	90	2.9	6	10	122	3	8	M16	[5/8"]	18	4.29	3.74
80	88.9	200	24	24	24	160	58	105	3.2	8	12	138	3	8	M16	[5/8"]	18	5.88	4.75
100	108	235	24	24	24	190	65	128	3.6	8	12	162	3	8	M20	[3/4"]	23	7.54	6.52
125	133	270	26	26	26	220	68	155	4.0	8	12	188	3	8	M24	[7/8"]	27	10.8	9.07
150	159	300	28	28	28	250	75	182	4.5	10	12	218	3	8	M24	[7/8"]	27	14.5	11.8
200	216	360	30	30	30	310	80	240	6.3	10	16	278	3	12	M24	[7/8"]	27	22.3	17.0
250	267	425	32	32	32	370	88	292	7.1	12	18	335	3	12	M27	[1"]	30	33.5	24.4
300	318	485	34	34	34	430	92	345	8.0	12	18	395	4	16	M27	[1"]	30	46.3	31.2
350	355.6	555	38	38	38	490	100	398	8.0	12	20	450	4	16	M30	[1 1/4"]	33	68.0	45.0
400	406.4	620	40	40	40	550	110	452	8.8	12	20	505	4	16	M33	[1 1/4"]	36	89.7	58.7
500	508	730	44	44	44	660	125	558	10.0	12	20	615	4	20	M33	[1 1/4"]	36	138.0	86.1
600	609.6	845	46	-	-	770	125	660	11.0	12	20	720	5	20	M36	[1 3/8"]	39	-	101.0
700	711.2	960	46	-	-	875	125	760	12.5	12	20	820	5	24	M39	[1 1/2"]	42	-	134.0
800	812.8	1085	50	-	-	990	135	865	14.2	12	22	930	5	24	M45	[1 3/4"]	48	-	183.0
900	914.4	1185	54	-	-	1090	145	968	16.0	12	24	1030	5	28	M45	[1 3/4"]	48	-	232.0
1000	1016	1320	58	-	-	1210	155	1070	17.5	16	24	1140	5	28	M52	[2"]	56	-	302.0

Notes : Out side diameter of pipe complies with ISO recommendation R64