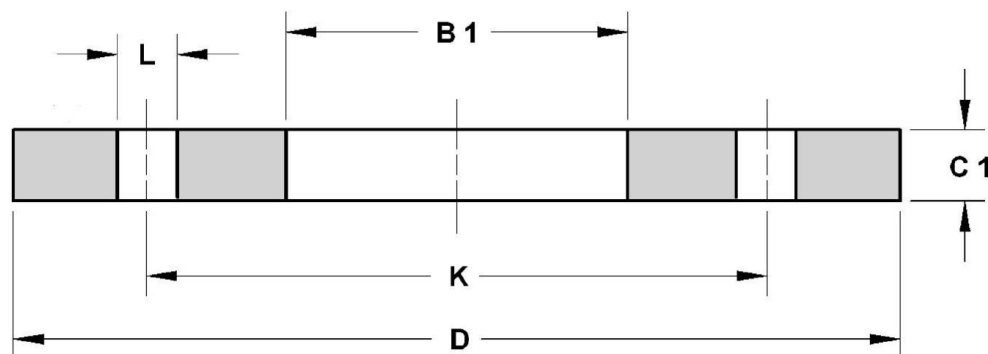


EN 1092-1 TYPE 01 PN 6 FLANGE  
PLATE FLANGE PN 6

EN 1092-1 : 2013  
TYPE 01/A PN 6



EN 1092-1 TYPE 01PN 6 FLANGE DIMENSION

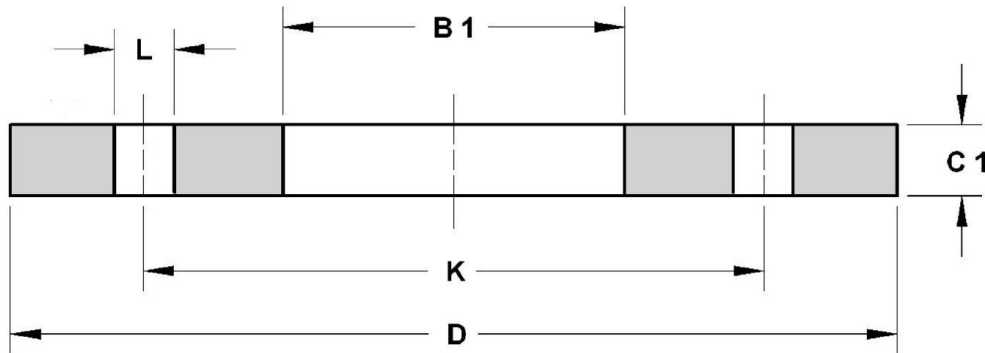
Dimensions in mm.

	DN	D	K	FORI / BOLTING			B1	C1	Kg.
				L	N°	SIZE			
	10	75	50	11	4	M10	18.0	12	0.36
	15	80	55	11	4	M10	22.0	12	0.41
	20	90	65	11	4	M10	27.5	14	0.60
	25	100	75	11	4	M10	34.5	14	0.74
	32	120	90	14	4	M12	43.5	16	1.19
	40	130	100	14	4	M12	49.5	16	1.39
	50	140	110	14	4	M12	61.5	16	1.53
	65	160	130	14	4	M12	77.5	16	1.89
	80	190	150	18	4	M16	90.5	18	2.98
	100	210	170	18	4	M16	116.0	18	3.46
	125	240	200	18	8	M16	141.5	20	4.60
	150	265	225	18	8	M16	170.5	20	5.22
	200	320	280	18	8	M16	221.5	22	7.15
	250	375	335	18	12	M16	276.5	24	9.61
	300	440	395	22	12	M20	327.5	24	12.60
	350	490	445	22	12	M20	359.5	26	15.60
	400	540	495	22	16	M20	411.0	28	18.40
	450	595	550	22	16	M20	462.0	30	21.40
	500	645	600	22	20	M20	513.5	30	24.60
	600	755	705	26	20	M24	616.5	32	35.00
	700	860	810	26	24	M24	714.2	40	48.00
	800	975	920	30	24	M27	815.8	44	63.00
	900	1075	1020	30	24	M27	917.4	48	74.50
	1000	1175	1120	30	28	M27	1019.0	52	82.00

C&N INDUSTRIAL GROUP LIMITED  
Bill@cnpipelinefitting.com

EN 1092-1 TYPE 01 PN 10 FLANGE  
PLATE FLANGE PN 10

EN 1092-1 : 2013  
TYPE 01/A PN 10



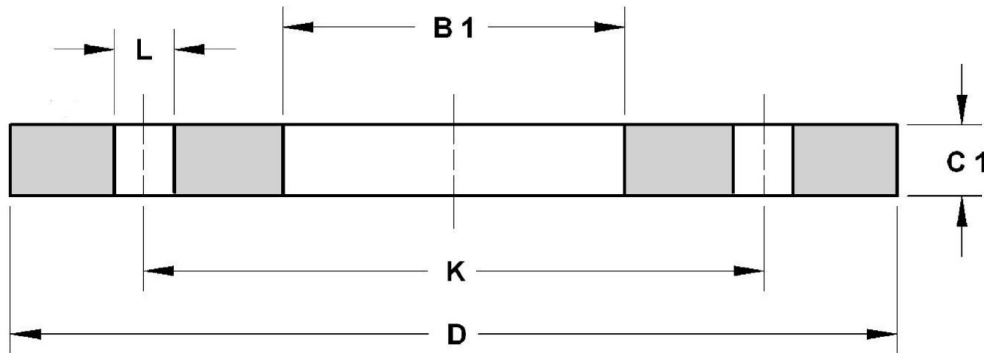
Dimensions in mm.

	DN	D	K	FORI / BOLTING			B1	C1	Kg.
				L	N°	SIZE			
	200	340	295	22	8	M20	221.5	24	9.31
	250	395	350	22	12	M20	276.5	26	11.90
	300	445	400	22	12	M20	327.5	26	13.80
	350	505	460	22	16	M20	359.5	30	19.00
	400	565	515	26	16	M24	411.0	32	25.90
	450	615	565	26	20	M24	462.0	36	33.50
	500	670	620	26	20	M24	513.5	38	41.10
	600	780	725	30	20	M27	616.5	42	54.50
	700	895	840	30	24	M27	714.2	50	65.00
	800	1015	950	33	24	M30	815.8	56	88.00
	900	1115	1050	33	28	M30	917.4	62	100.00
	1000	1230	1160	36	28	M33	1019.0	70	128.00

C&N INDUSTRIAL GROUP LIMITED  
Bill@cnpipfitting.com

EN 1092-1 TYPE 01 PN 16 FLANGE  
PLATE FLANGE PN 16

EN 1092-1 : 2013  
TYPE 01/A PN 16

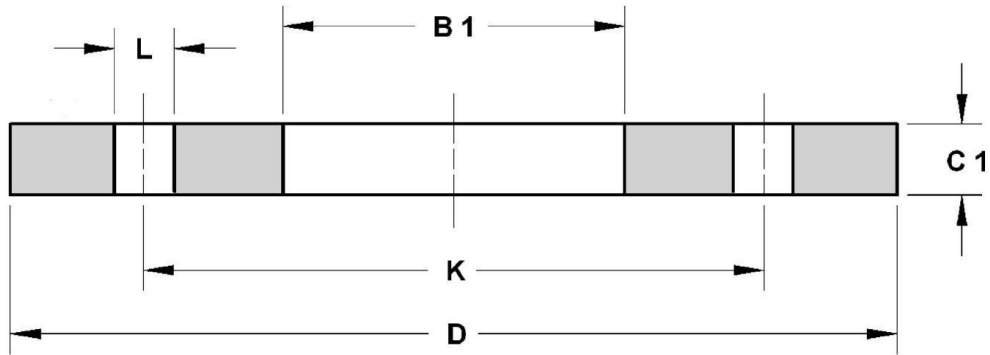


Dimensions in mm.

	DN	D	K	FORI / BOLTING			B1	C1	Kg.
				L	N°	SIZE			
	50	165	125	18	4	M16	61.5	20	2.50
	65	185	145	18	4	M16	77.5	20	3.00
	65	185	145	18	8	M16	77.5	20	3.00
	80	200	160	18	8	M16	90.5	20	3.50
	100	220	180	18	8	M16	116.0	22	4.40
	125	250	210	18	8	M16	141.5	22	5.50
	150	285	240	22	8	M20	170.5	24	7.00
	200	340	295	22	12	M20	221.5	26	9.50
	250	405	355	26	12	M24	276.5	29	14.00
	300	460	410	26	12	M24	327.5	32	19.00
	350	520	470	26	16	M24	359.5	35	28.00
	400	580	525	30	16	M27	411.0	38	36.00
	450	640	585	30	20	M27	462.0	42	46.00
	500	715	650	33	20	M30	513.5	46	64.00
	600	840	770	36	20	M33	616.5	55	96.00
	700	910	840	36	24	M33	714.2	63	88.00
	800	1025	950	39	24	M36	815.8	74	115.00
	900	1125	1050	39	28	M36	917.4	82	125.00
	1000	1255	1170	42	28	M39	1019.0	90	160.00

C&N INDUSTRIAL GROUP LIMITED  
Bill@cnpipelinefitting.com

EN 1092-1 TYPE 01 PN 25 FLANGE  
 PLATE FLANGE PN 25

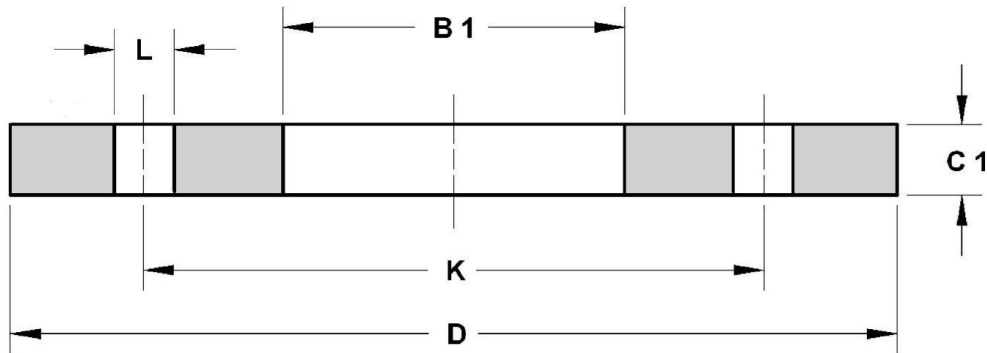


Dimensions in mm.

	DN	D	K	FORI / BOLTING			B1	C1	Kg.
				L	N°	SIZE			
	200	360	310	26	12	M24	221.5	32	14.50
	250	425	370	30	12	M27	276.5	35	20.00
	300	485	430	30	16	M27	327.5	38	26.50
	350	555	490	33	16	M30	359.5	42	42.00
	400	620	550	36	16	M33	411.0	48	55.00
	450	670	600	36	20	M33	462.0	54	64.50
	500	730	660	36	20	M33	513.5	58	84.00
	600	845	770	39	20	M36	616.5	68	127.50

# EN 1092-1 TYPE 01 PN 40 FLANGE PLATE FLANGE PN 40

**EN 1092-1 : 2013  
TYPE 01/A PN 40**



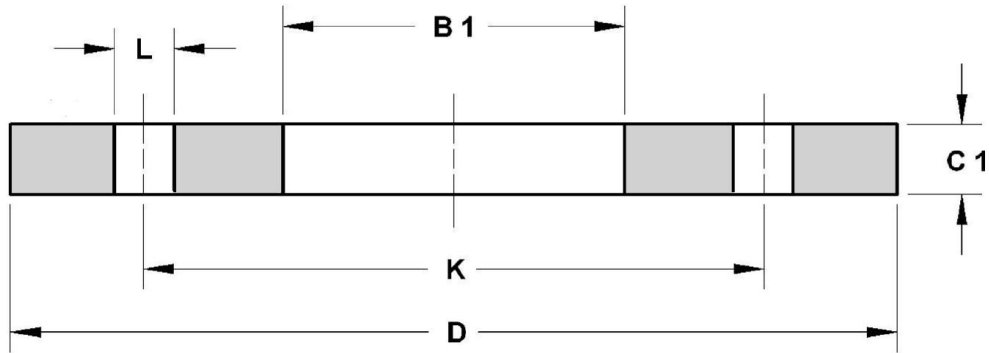
Dimensions in mm.

\*Values used unless otherwise specified by purchaser

	DN	D	K	FORI / BOLTING			B1	C1	Kg.
				L	N°	SIZE			
	10	90	60	14	4	M12	18.0	14	0.60
	15	95	65	14	4	M12	22.0	14	0.67
	20	105	75	14	4	M12	27.5	16	0.94
	25	115	85	14	4	M12	34.5	16	1.00
	32	140	100	18	4	M16	43.5	18	1.83
	40	150	110	18	4	M16	49.5	18	2.00
	50	165	125	18	4	M16	61.5	20	2.50
	65	185	145	18	8	M16	77.5	22	3.50
	80	200	160	18	8	M16	90.5	24	4.50
	100	235	190	22	8	M20	116.0	26	6.00
	125	270	220	26	8	M24	141.5	28	8.00
	150	300	250	26	8	M24	170.5	30	10.30
	200	375	320	30	12	M27	221.5	36	18.00
	250	450	385	33	12	M30	276.5	42	29.50
	300	515	450	33	16	M30	327.5	52	41.50
	350	580	510	36	16	M33	359.5	58	62.00
	400	660	585	39	16	M36	411.0	65	89.50
	450	685	610	39	20	M36	462.0	66*	91.50
	500	755	670	42	20	M39	513.5	72*	120.00
	600	890	795	48	20	M45	616.5	84*	189.00

EN 1092-1 TYPE 01 PN 63 FLANGE  
 PLATE FLANGE PN 63

EN 1092-1 : 2013  
 TYPE 01/A PN 63

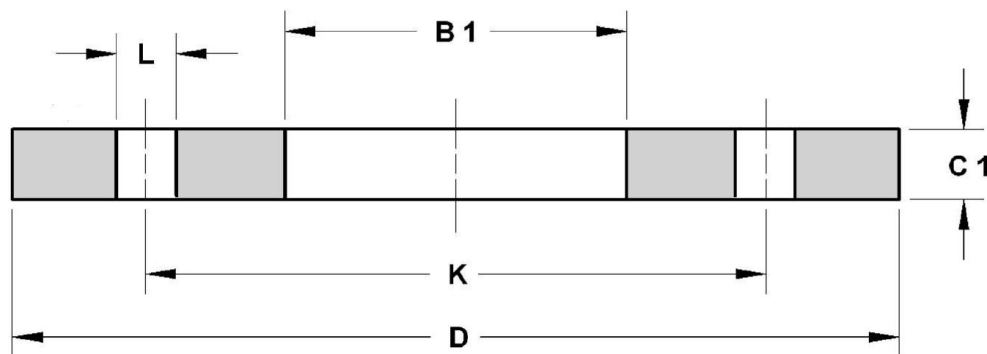


Dimensions in mm.

	DN	D	K	FORI / BOLTING			B1	C1	Kg.
				L	N°	SIZE			
	50	180	135	22	4	M20	61.5	26	4.50
	65	205	160	22	8	M20	77.5	26	5.00
	80	215	170	22	8	M20	90.5	30	6.50
	100	250	200	26	8	M24	116.0	32	8.50
	125	295	240	30	8	M27	141.5	34	12.50
	150	345	280	33	8	M30	170.5	36	18.00
	200	415	345	36	12	M33	221.5	48	30.50
	250	470	400	36	12	M33	276.5	55	43.00
	300	530	460	36	16	M33	327.5	65	58.50
	350	600	525	39	16	M36	359.5	72	91.50
	400	670	585	42	16	M39	411.0	80	121.00
	450								
	500	800	705	48	20	M45			
	600	930	820	56	20	M52			

# EN 1092-1 TYPE 01 PN 100 FLANGE PLATE FLANGE PN 100

**EN 1092-1 : 2013  
TYPE 01/A PN 100**



Dimensions in mm.

\*Values used unless otherwise specified by purchaser

Cod.	DN	D	K	FORI / BOLTING			B1	C1	Kg.
				L	N°	SIZE			
	10	100	70	14	4	M12	18.0	20	1.00
	15	105	75	14	4	M12	22.0	20	1.00
	20	130	90	18	4	M16	27.5	22	2.00
	25	140	100	18	4	M16	34.5	24	2.50
	32	155	110	22	4	M20	43.5	24	3.00
	40	170	125	22	4	M20	49.5	26	4.00
	50	195	145	26	4	M24	61.5	28	5.50
	65	220	170	26	8	M24	77.5	30	7.00
	80	230	180	26	8	M24	90.5	34	8.00
	100	265	210	30	8	M27	116.0	36	11.00
	125	315	250	33	8	M30	141.5	42	18.50
	150	355	290	33	12	M30	170.5	48	25.00
	200	430	360	36	12	M33	221.5	60	44.50
	250	505	430	39	12	M36	276.5	72	71.00
	300	585	500	42	16	M39	327.5	84	107.00
	350	655	560	48	16	M45	359.5	95	154.00
	400	715	620	48	16	M45	411.0	106*	199.50
	450								
	500	870	760	56	20	M52	513.5	128*	399.50