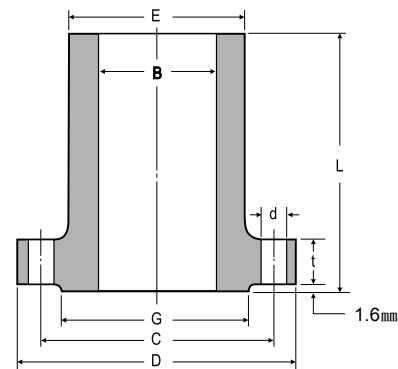


# CLASS 150 FLANGES

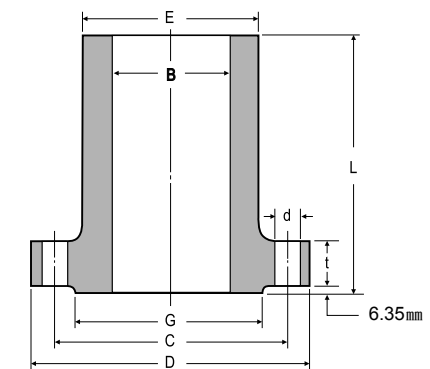
## LONG WELDING NECK



Unit:mm

Nominal Pipe Size	Out side Diameter D	O.D of Raised Face G	Hub Diameter at Bevel E	Diameter of Bore B	Thickness of Flange Min. t	Length Through Hub L	DRILLING		
							Diameter of Bolt Circle C	Number of Holes	Diameter of Holes d
1/2	89	35.1	30.2	12.7	11.2	228.6	60.5	4	15.7
3/4	99	42.9	38.1	19.1	12.7	228.6	69.9	4	15.7
1	108	50.8	50.8	25.4	14.2	228.6	79.2	4	15.7
1 1/4	117	63.5	60.5	31.8	15.7	228.6	88.9	4	15.7
1 1/2	127	73.2	66.5	38.1	17.5	228.6	98.6	4	15.7
2	152	91.9	82.6	50.8	19.1	228.6	120.7	4	19.1
2 1/2	178	104.6	95.3	63.5	22.4	228.6	139.7	4	19.1
3	191	127.0	108.0	76.2	23.9	228.6	152.4	4	19.1
3 1/2	216	139.7	124.0	88.9	23.9	228.6	177.8	8	19.1
4	229	157.2	139.7	101.6	23.9	304.8	190.5	8	19.1
5	254	185.7	165.1	127.0	23.9	304.8	215.9	8	22.4
6	279	215.9	196.9	152.4	25.4	304.8	241.3	8	22.4
8	343	269.7	247.7	203.2	28.4	304.8	298.5	8	22.4
10	406	323.9	304.8	254.0	30.2	304.8	362.0	12	25.4
12	483	381.0	365.3	304.8	31.8	304.8	431.8	12	25.4
14	533	412.8	406.4	355.6	35.1	304.8	476.3	12	28.4
16	597	469.9	457.2	406.4	36.6	304.8	539.8	16	28.4
18	635	533.4	508.0	457.2	39.6	304.8	577.9	16	31.8
20	699	584.2	558.8	508.0	42.9	304.8	635.0	20	31.8
24	813	692.2	666.8	609.6	47.8	304.8	749.3	20	35.1

# CLASS 400 FLANGES



Unit:mm

Nominal Pipe Size	Out side Diameter D	O.D of Raised Face G	Hub Diameter at Bevel E	Diameter of Bore B	Thickness of Flange Min. t	Length Through Hub L	DRILLING		
							Diameter of Bolt Circle C	Number of Holes	Diameter of Holes d
1									
1 1/4									
1 1/2									
2									
2 1/2									
3									
3 1/2									
4	254	157.2	146.1	101.6	35.1	304.8	200.2	8	25.4
5	279	185.7	177.8	127.0	38.1	304.8	235.0	2	25.4
6	318	215.9	206.4	152.2	41.1	304.8	269.7	12	25.4
8	381	269.7	260.4	203.2	47.8	304.8	330.2	12	28.4
10	445	323.9	320.5	254.0	53.8	304.8	387.4	16	31.8
12	521	381.0	374.7	304.8	57.2	304.8	450.9	16	35.1
14	584	412.8	425.5	355.6	60.5	304.8	514.4	20	35.1
16	648	469.9	482.6	406.4	63.5	304.8	571.5	24	38.1
18	711	533.4	533.4	457.2	66.5	304.8	628.7	24	38.1
20	775	584.2	587.2	508.0	69.9	304.8	685.8	24	41.1
24	914	692.2	701.5	609.6	76.2	304.8	812.8	24	47.8

Use Class 600 dimensions in these sizes.

# CLASS 300 FLANGES

Unit:mm

Nominal Pipe Size	Out side Diameter D	O.D of Raised Face G	Hub Diameter at Bevel E	Diameter of Bore B	Thickness of Flange Min. t	Length Through Hub L	DRILLING		
							Diameter of Bolt Circle C	Number of Holes	Diameter of Holes d
1/2	95	35.1	38.1	12.7	14.2	228.6	66.5	4	15.7
3/4	117	42.9	47.8	19.1	15.7	228.6	82.6	4	19.1
1	124	50.8	53.8	25.4	17.5	228.6	88.9	4	19.1
1 1/4	133	63.5	63.5	31.8	19.1	228.6	98.6	4	19.1
1 1/2	155	73.2	69.9	38.1	20.6	228.6	114.3	4	22.4
2	165	91.9	84.1	50.8	22.4	228.6	127.0	8	19.1
2 1/2	191	104.6	100.1	63.5	25.4	228.6	149.4	8	22.4
3	210	127.0	117.3	76.2	28.4	228.6	168.1	8	22.4
3 1/2	229	139.7	133.4	88.9	30.2	228.6	184.2	8	22.4
4	254	157.2	146.1	101.6	31.8	304.8	200.2	8	22.4
5	279	185.7	177.8	127.0	35.1	304.8	235.0	8	22.4
6	318	215.9	206.2	152.4	36.6	304.8	269.7	12	22.4
8	381	269.7	260.4	203.2	41.1	304.8	330.2	12	25.4
10	445	323.9	320.5	254.0	47.8	304.8	387.4	16	28.4
12	521	381.0	374.7	304.8	50.8	304.8	450.9	16	31.8
14	584	412.8	425.5	355.6	53.8	304.8	514.4	20	31.8
16	648	469.9	482.6	406.4	57.2	304.8	571.5	20	35.1
18	711	533.4	533.4	457.2	60.5	304.8	628.7	24	35.1
20	775	584.2	587.2	508.0	63.5	304.8	685.8	24	35.1
24	914	692.2	701.5	609.6	69.9	304.8	812.8	24	41.1

Notes: (1) Bore (B) is the same as nominal pipe size.  
(2) Welding necks longer than listed are available in all sizes on special order.

# CLASS 600 FLANGES

Unit:mm

Nominal Pipe Size	Out side Diameter D	O.D of Raised Face G	Hub Diameter at Bevel E	Diameter of Bore B	Thickness of Flange Min. t	Length Through Hub L	DRILLING		
							Diameter of Bolt Circle C	Number of Holes	Diameter of Holes d
1	124	50.8	53.8	25.4	17.5	228.6	88.9	4	19.1
1 1/4	133	63.5	63.5	31.8	20.6	228.6	98.6	4	19.1
1 1/2	155	73.2	69.9	38.1	22.4	228.6	114.3	4	22.4
2	165	91.9	84.1	50.8	25.4	228.6	127.0	8	19.1
2 1/2	191	104.6	100.1	63.5	28.4	228.6	149.4	8	22.4
3	210	127.0	117.3	76.2	31.8	228.6	168.1	8	22.4
3 1/2	229	139.7	133.4	88.9	35.1	228.6	184.2	8	25.4
4	273	157.2	152.4	101.6	38.1	304.8	215.9	8	25.4
5	330	185.7	190.5	127.0	44.5	304.8	266.7	8	28.4
6	356	215.9	222.3	152.4	47.8	304.8	292.1	12	28.4
8	419	269.7	273.1	203.2	55.6	304.8	349.3	12	31.8
10	508	323.9	342.9	254.0	63.5	304.8	431.8	16	35.1
12	559	381.0	400.1	304.8	66.5	304.8	489.0	20	35.1
14	603	412.8	431.8	355.6	69.9	304.8	527.1	20	38.1
16	686	469.9	495.3	406.4	76.2	304.8	603.3	20	41.1
18	743	533.4	546.1	457.2	82.6	304.8	654.1	20	44.5
20	813	584.2	609.6	508.0	88.9	304.8	723.9	24	44.5
24	940	692.2	717.6	609.6	101.6	304.8	838.2	24	50.8

Notes: (1) Bore (B) is the same as nominal pipe size.  
(2) Welding necks longer than listed are available in all sizes on special order.