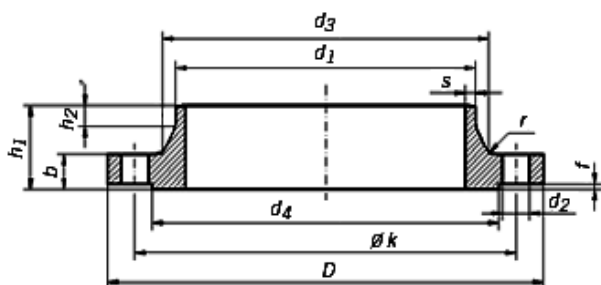


# SHANGHAI C&N INDUSTRIAL GROUP LIMITED

Professional Flanges, fittings manufacturer and exporter

bill@cnpipfitting.com

## DIN2634 PN25 Flanges



### Dimensions of DIN 2634 PN25 Flanges

Rated Diameter	d1		Flange				Neck				Raised face		screws			weight
	ISO Series 1	DIN Series 2	D	b	k	h1	d3	s	r	h2	d4	f	Number	Thread	d2	Kg
15	-	20	95	16	65	38	30	2	4	6	45	2	4	M 12	14	0,746
	21,3	-					32									
20	-	25	105	18	75	40	38	2,3	4	6	58	2	4	M 12	14	1,06
	26,9	-					40									
25	-	30	115	18	85	40	42	2,6	4	6	68	2	4	M 12	14	1,29
	33,7	-					45									
32	-	38	140	18	100	42	52	2,6	6	6	78	2	4	M 16	18	1,88
	42,4	-					56									
40	-	44,5	150	18	110	45	60	2,6	6	7	88	3	4	M 16	18	2,33
	48,3	-					64									
50	-	57	165	20	125	48	72	2,9	6	8	102	3	4	M 16	18	2,82
	60,3	-					75									
65	76,1	-	185	22	145	52	90	2,9	6	10	122	3	8	M 16	18	3,74
80	88,9	-	200	24	160	58	105	3,2	8	12	138	3	8	M 16	18	4,75
100	-	108	235	24	190	65	128	3,6	8	12	162	3	8	M 20	22	6,52
	114,3	-					134									
125	-	133	270	26	220	68	155	4	8	12	188	3	8	M 24	26	9,07
	139,7	-					162									
150	-	159	300	28	250	75	182	4,5	10	12	218	3	8	M 24	26	11,8
	168,3	-					192									
175	193,7	-	350	28	280	75	218	5,6	10	15	248	3	12	M 24	26	13,4
200	219,1	-	360	30	310	80	244	6,3	10	16	278	3	12	M 24	26	17
250	-	267	425	32	370	88	292	7,1	12	18	335	3	12	M 27	30	24,4
	273	-					298									
300	323,9	-	485	34	430	92	352	8	12	18	395	4	16	M 27	30	31,2
350	355,6	-	555	38	490	100	398	8	12	20	450	4	16	M 30	33	47,2
	-	368														44,2
400	406,4	-	620	40	550	110	452	8,8	12	20	505	4	16	M 33	36	61,7
	-	419														57,9
450	457	-	670	42	600	110	500	8,8	12	20	550	4	20	M 33	36	71,9
500	508	-	730	44	660	125	558	10	12	20	615	4	20	M 33	36	89,6
600	610	-	845	46	770	125	660	11	12	20	720	5	20	M 36	39	104
700	711	-	960	46	875	125	760	13	20	24	820	5	24	M 39	42	136
800	813	-	1085	50	990	135	865	14	22	24	930	5	24	M 45	48	186

# SHANGHAI C&N INDUSTRIAL GROUP LIMITED

Professional Flanges, fittings manufacturer and exporter

bill@cnpipelinefitting.com

900	914	-	1185	54	1090	145	968	16	24	28	1030	5	28	M 45	48	236
1000	1016	-	1320	58	1210	155	1070	18	24	28	1140	5	28	M 52	56	307

## Weld Neck Flanges

This flange is circumferentially welded into the system at its neck which means that the integrity of the butt welded area can be easily examined by radiography. The bores of both pipe and flange match , which reduces turbulence and erosion inside the pipeline .The weld neck is therefore favoured in critical applications .

Material:

CARBON STEEL – CT20, ASTM/ASME SA-105, A-350 LF-2, LF-3, A694, SA-516-70,

CHROME ALLOYS – A-182-F-1, F-5, F-9, F-11, F-12, F-22,

STAINLESS STEEL – A-182 – F-304, 304L, 316, 316L, 309, 310, 317L, 321, 347, Alloy 20

ALUMINUM – 1100, 2014, 3003, 5083, 5086, 6061, 7075

HASTALLOY – B-2, C-276, G, X

INCONEL – 600, 601, 625, 718

INCOLLOY – 800, 825

MONEL – 400