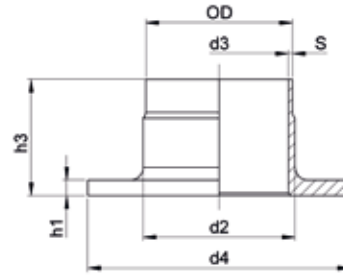


**composite weld neck - inner flange**  
**DIN 86037 /**  
**EEMUA 145 in copper nickel**  
**inner flange - 10 bar - DIN 86037**  
**STANDARD : DIN 86037 PN 10**



Size			Wall Thickness						Approx. Weight
DN		OD	S	d <sub>2</sub>	d <sub>3</sub>	d <sub>4</sub>	h <sub>1</sub>	h <sub>3</sub>	kg /piece
in	mm	mm	mm	mm	mm	mm	mm	mm	
¾	20	25	1.5	27	22	58	5	40	0.15
¾	20	25	2	27	21	58	5	40	0.16
<b>1</b>	<b>25</b>	<b>30</b>	<b>1.5</b>	<b>32</b>	<b>27</b>	<b>68</b>	<b>5</b>	<b>40</b>	<b>0.20</b>
1	25	30	2	32	26	68	5	40	0.21
<b>1¼</b>	<b>32</b>	<b>38</b>	<b>1.5</b>	<b>40</b>	<b>35</b>	<b>78</b>	<b>5</b>	<b>40</b>	<b>0.25</b>
1¼	32	38	2	40	34	78	5	40	0.27
<b>1½</b>	<b>40</b>	<b>44.5</b>	<b>1.5</b>	<b>46.5</b>	<b>41.5</b>	<b>88</b>	<b>6</b>	<b>45</b>	<b>0.36</b>
1½	40	44.5	2	46.5	40.5	88	6	45	0.38
<b>2</b>	<b>50</b>	<b>57</b>	<b>1.5</b>	<b>59</b>	<b>54</b>	<b>102</b>	<b>6</b>	<b>45</b>	<b>0.45</b>
2	50	57	2	59	53	102	6	45	0.48
<b>2½</b>	<b>65</b>	<b>76</b>	<b>2</b>	<b>78</b>	<b>72</b>	<b>122</b>	<b>6</b>	<b>45</b>	<b>0.62</b>
<b>3</b>	<b>80</b>	<b>89</b>	<b>2</b>	<b>91</b>	<b>85</b>	<b>138</b>	<b>7</b>	<b>50</b>	<b>0.86</b>
<b>4</b>	<b>100</b>	<b>108</b>	<b>2.5</b>	<b>110</b>	<b>103</b>	<b>158</b>	<b>7</b>	<b>50</b>	<b>1.10</b>
5	125	133	2.5	135.5	128	188	7	50	1.50
6	150	159	2.5	161.5	154	212	9	50	2.00
7	175	194	3	197	188	242	9	50	2.40
8	200	219	3	222	213	268	9	50	2.70
10	250	267	3	270	261	320	9	50	3.40
12	300	324	4	327	316	370	11	50	4.60
14	350	368	4	371	360	430	11	50	6.30
16	400	419	4	422	411	482	12	50	7.50
18	450	457	4	460	449	530	12	50	9.00
20	500	508	4.5	511	499	585	12	50	11.00
24	600	610	4.5	613	601	685	14	60	15.00
28	700	711	6	714	699	800	14	60	21.00
32	800	813	6	816	801	905	14	60	24.00
36	900	914	8	918	898	1000	14	60	29.00
40	1000	1016	8	1018	1000	1110	14	60	34.00
48	1200	1220	8	1223.5	1204	1335	14	60	46.00

Other dimensions on request.

# Outer Flanges

**Specification:**

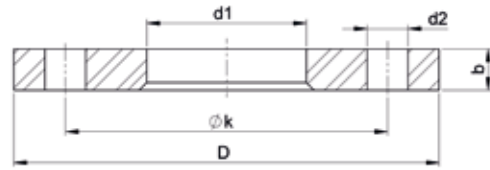
DIN 86037, EN 1092-3 PN10

**Material:**

Carbon steel

**Note:**

Steel flanges will be supplied hot-dip galvanized.



PN 10		Size		D	d <sub>1</sub>	b	k	d <sub>2</sub>	Bolt Holes	Approx. Weight kg /piece
in	DN	mm	OD							
¾		20	25	105	28	14	75	14	4	0.81
<b>1</b>		<b>25</b>	<b>30</b>	<b>115</b>	<b>33</b>	<b>16</b>	<b>85</b>	<b>14</b>	<b>4</b>	<b>1.11</b>
<b>1¼</b>		<b>32</b>	<b>38</b>	<b>140</b>	<b>41</b>	<b>16</b>	<b>100</b>	<b>18</b>	<b>4</b>	<b>1.64</b>
<b>1½</b>		<b>40</b>	<b>44.5</b>	<b>150</b>	<b>48</b>	<b>16</b>	<b>115</b>	<b>18</b>	<b>4</b>	<b>1.86</b>
<b>2</b>		<b>50</b>	<b>57</b>	<b>165</b>	<b>62</b>	<b>16</b>	<b>125</b>	<b>18</b>	<b>4</b>	<b>2.20</b>
<b>2½</b>		<b>65</b>	<b>76</b>	<b>185</b>	<b>81</b>	<b>16</b>	<b>145</b>	<b>18</b>	<b>4</b>	<b>2.62</b>
<b>3</b>		<b>80</b>	<b>89</b>	<b>200</b>	<b>94</b>	<b>18</b>	<b>160</b>	<b>18</b>	<b>8</b>	<b>3.32</b>
<b>4</b>		<b>100</b>	<b>108</b>	<b>220</b>	<b>113</b>	<b>18</b>	<b>180</b>	<b>18</b>	<b>8</b>	<b>3.67</b>
5		125	133	250	138	18	210	18	8	4.54
6		150	159	285	164	18	240	22	8	5.60
7		175	194	315	200	22	270	22	8	6.50
8		200	219	340	225	20	295	22	8	7.46
10		250	267	395	278	22	350	22	12	10.30
12		300	324	445	331	24	400	22	12	12.10
14		350	368	505	375	24	460	22	16	15.70
16		400	419	565	426	26	515	26	16	20.10
18		450	457	615	465	28	565	26	20	25.40
20		500	508	670	517	30	620	26	20	30.80
24		600	610	780	618	32	725	30	20	40.50
28		700	711	895	720	34	840	30	24	54.00
32		800	813	1015	822	38	950	33	24	76.00
36		900	914	1115	923	42	1050	33	28	92.00
40		1000	1016	1230	1025	46	1160	36	28	120.00
48		1200	1220	1455	1230	50	1380	39	32	170.00