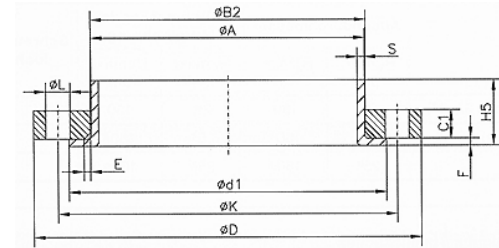


Lap joint flanges DIN 2642 PN10/PN16

EN 1092-1 Type 02

For nominal sizes larger than DN 150, EN standardizes pressure levels PN 10 and PN 16.
 From DN 50 to DN 150, the EN refers to the standard series of PN 16 pressure level.
 For dimensions up to DN 40, the EN refers to the standard series of PN 40 pressure level.

The European standard EN 1092-1/02 has replaced the national standard DIN 2642 in 2007.
 New in EN 1092-1 are the pressure level PN 16 for loose plate flanges.



Stainless Steel DIN2642 PN10 Lapped Flange Dimensions,
 Carbon Steel DIN2642 PN10 Lapped Flange Dimensions,

DN	Pipe OD	D	B2	C1	K	L	Qty.	weight
10	17,2	90	19,0	12	60	14	4	0,16
15	18,0 – 21,3	95	24,0	12	65	14	4	0,18
20	23,0 - 25,0	105	30,0	12	75	14	4	0,20
	26,9	105	30,0	12	75	14	4	0,20
25	28,0 - 30,0	115	33,0	12	85	14	4	0,34
	33,7	115	36,0	12	85	14	4	0,34
32	35,0 - 38,0	140	42,0	16	100	18	4	0,52
	42,4	140	46,0	16	100	18	4	0,52
40	40,0 - 44,5	150	48,0	16	110	18	4	0,58
	48,3	150	54,0	16	110	18	4	0,58
50	53,0 - 54,0	165	60,0	16	125	18	4	0,82
	60,3	165	65,0	16	125	18	4	0,82
65*)	68,0 - 70,0	185	73,0	16	145	18	4	0,98
	76,1	185	81,0	16	145	18	4	0,98
80	83,0 - 84,0	200	90,0	18	160	18	8	1,14
	88,9	200	94,0	18	160	18	8	1,14
100	103,0 - 106,0	220	111,0	18	180	18	8	1,30
	114,3	220	119,0	18	180	18	8	1,30
125	128,0 - 133,0	250	136,0	18	210	18	8	1,78
	139,7	250	144,0	18	210	18	8	1,78
150	153,0 - 156,0	285	161,0	18	240	23	8	2,26
	168,3	285	173,0	18	240	23	8	2,26
200	204,0 - 206,0	340	212,0	18	295	23	8	3,22
	219,1	340	225,0	18	295	23	8	3,22
250	254,0 - 256,0	395	264,0	20	350	23	12	4,10
	273,0	395	279,0	20	350	23	12	4,10
300	304,0 - 306,0	445	315,0	22	400	23	12	4,76
	323,9	445	329,0	22	400	23	12	4,76
350	355,0 – 358,0	505	362,0	22	460	23	16	5,50
400	406,0 - 408,0	565	413,0	25	515	27	16	8,50
450	456,0 – 458,0	615	465,0	25	565	27	20	9,00
500	506,0 - 508,0	670	517,0	28	620	27	20	11,20
600	606,0 - 610,0	780	618,0	30	725	30	20	12,50
700	706,0 – 711,0	895	721,0	32	840	30	24	21,00
800	808,0 – 813,0	1015	824,0	36	950	34	24	30,00

*) DN 65 is usually supplied with 4 bolt holes!
 Flanges according to PN 6, PN16 or ASTM available on request!