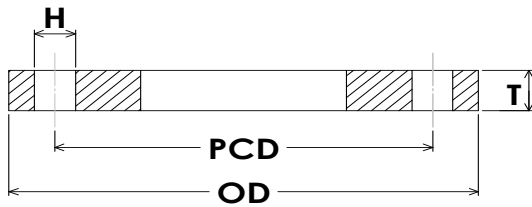
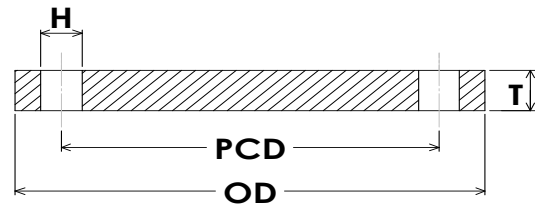


# AS 4087 PN16 Flange Dimensions



SLIP ON



BLIND

PN16				FLANGE THICKNESS		DRILLING DATA			PN16	
NOMINAL PIPE SIZE		FLANGE OUTSIDE DIAMETER		THICKNESS OF FLANGE		PITCH CIRCLE DIAMETER	BOLT HOLE DIAMETER	NUMBER OF BOLT HOLES	NOMINAL PIPE SIZE	
MM	INCH	OD		T		PCD	H	#	MM	INCH
50	2	150		11		114	18	4	50	2
65	2 1/2	165		11		127	18	4	65	2 1/2
80	3	185		11		146	18	4	80	3
100	4	215		13		178	18	4	100	4
150	6	280		13		235	18	8	150	6
200	8	335		19		292	18	8	200	8
225	9	370		19		324	18	8	225	9
250	10	405		19		356	22	8	250	10
300	12	455		23		406	22	12	300	12
350	14	525		30		470	26	12	350	14
375	15	550		30		495	26	12	375	15
400	16	580		30		521	26	12	400	16
450	18	640		30		584	26	12	450	18
500	20	705		38		641	26	16	500	20
600	24	825		48		756	30	16	600	24
700	28	910		56		845	30	20	700	28
750	30	995		56		927	33	20	750	30
800	32	1060		56		984	36	20	800	32
900	36	1175		66		1092	36	24	900	36
1000	40	1255		66		1175	36	24	1000	40
1200	48	1490		76		1410	36	32	1200	48

- NOTES:**
- (1) Stocked flanges are generally supplied as flat face
  - (1) Raised face or "O" ring groove also available.
  - (2) Flanges may also be supplied in weld neck and bossed configuration. (hub dimensions as per AS2129)